

FPD2-100-1000-30

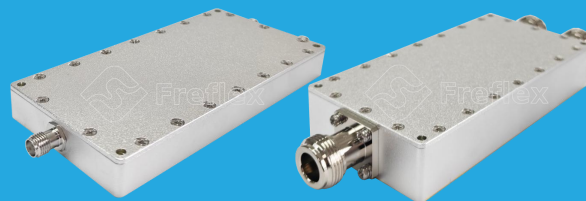
2-Way, 0.1~1GHz

Features:

- * Small Size
- * Low Insertion Loss

Applications:

- * Amplifiers
- * Mixers
- * Antennas
- * Laboratory Test



Electrical

Frequency:	0.1~1GHz
Insertion Loss ^{*1} :	1dB max.
VSWR:	1.2 max.
Isolation:	20dB min.
Amplitude Balance:	±0.1dB typ.
Phase Balance:	±2° typ.
Impedance:	50Ω
Power @SUM Port:	30W max. as divider 2W max. as combiner

[1] Excluding theoretical loss 3dB.

Mechanical

Connectors:	SMA Female, N Female
Mounting:	4-Φ2.8mm through-hole

Environmental

Operation Temperature:	-45~+85°C
Non-operating Temperature:	-55~+125°C

How To Order

FPD2-100-1000-30-Y

Y: Connector type

Connector naming rules:

S - SMA Female (Outline A)

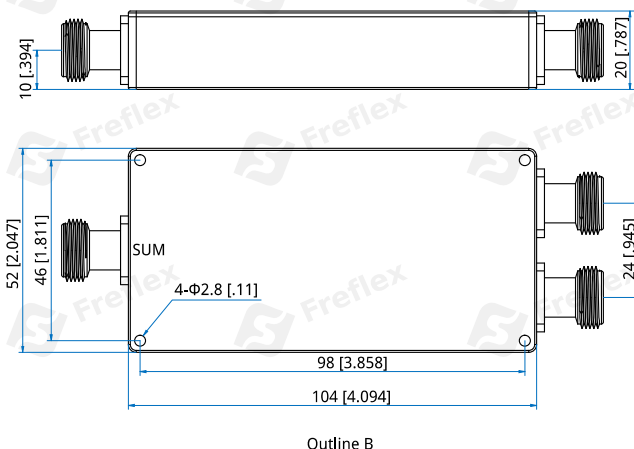
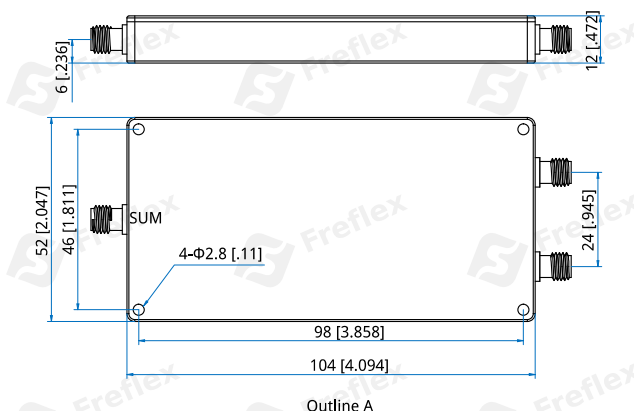
N - N Female (Outline B)

Examples:

To order a 2-way power divider, 0.1~1GHz, 30W, N female, specify FPD2-100-1000-30-N.

Customization is available upon request.

Outline Drawings

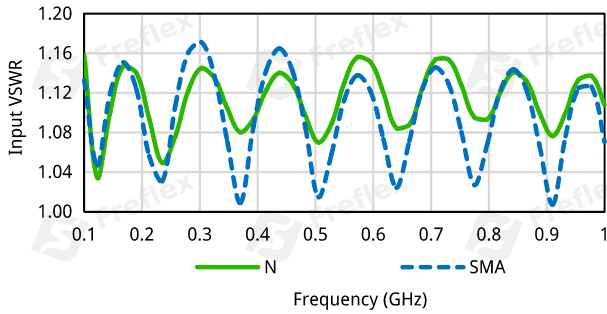


Unit: mm [in]
Tolerance: ±0.5mm [±0.02in]

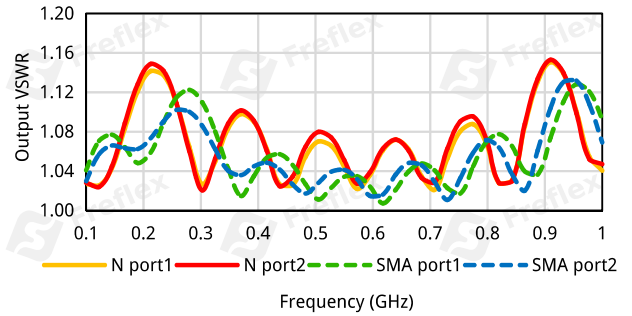
2-Way Power Divider/Combiner

Typical Performance Curves

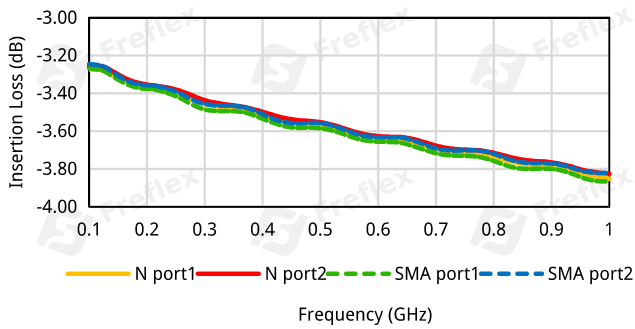
Input VSWR vs. Frequency



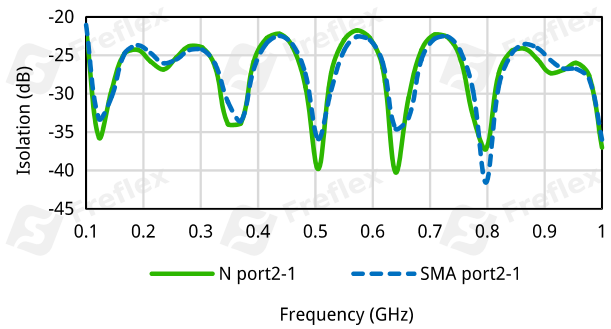
Output VSWR vs. Frequency



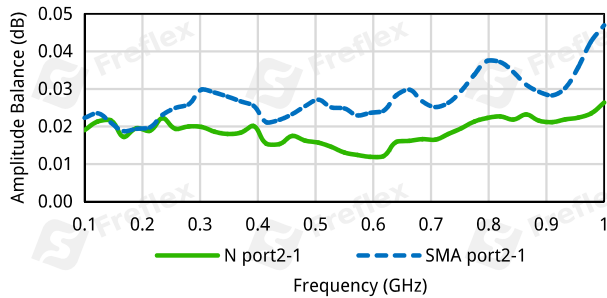
Insertion Loss vs. Frequency



Isolation vs. Frequency



Amplitude Balance vs. Frequency



Phase Balance vs. Frequency

