

FPD2-80-1000-30

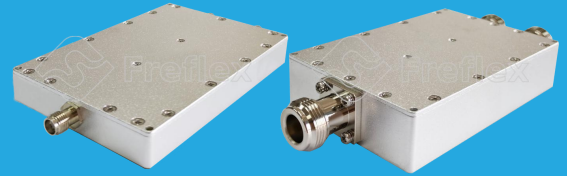
2-Way, 0.08~1GHz

Features:

- * Small Size
- * Low Insertion Loss

Applications:

- * Amplifiers
- * Mixers
- * Antennas
- * Laboratory Test



Electrical

Frequency:	0.08~1GHz
Insertion Loss*1:	1.2dB max.
Input VSWR:	1.3 max.
Output VSWR:	1.2 max.
Isolation:	20dB min.
Amplitude Balance:	±0.1dB typ.
Phase Balance:	±3° typ.
Impedance:	50Ω
Power @SUM Port:	30W max. as divider 2W max. as combiner

[1] Excluding theoretical loss 3dB.

Mechanical

Connectors:	SMA Female N Female TNC Female
Mounting:	4-Φ2.2mm through-hole

Environmental

Operating Temperature:	-45~+85°C
Non-operating Temperature:	-55~+125°C

How To Order

FPD2-80-1000-30-Y

Y: Connector type

Connector naming rules:

S - SMA Female (Outline A)

N - N Female (Outline B)

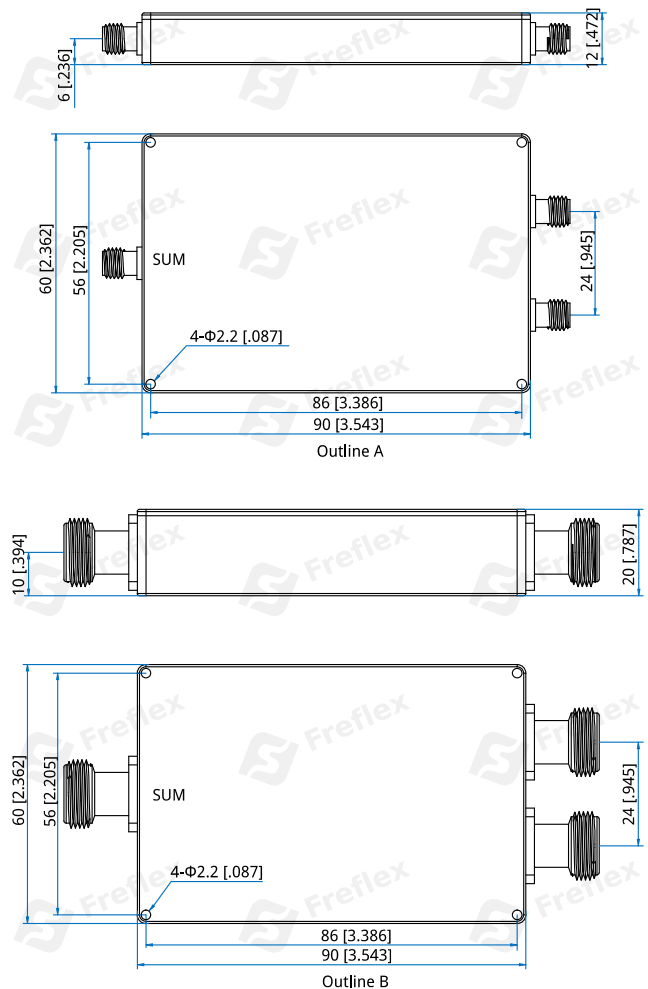
T - TNC Female (Outline B)

Examples:

To order a 2-way power divider, 0.08~1GHz, 30W, N female, specify FPD2-80-1000-30-N.

Customization is available upon request.

Outline Drawings



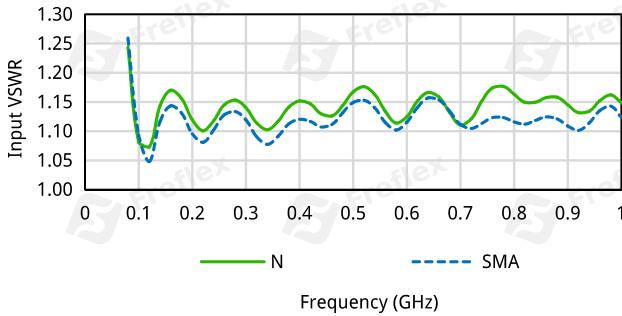
Unit: mm [in]

Tolerance: ±0.5mm [±0.02in]

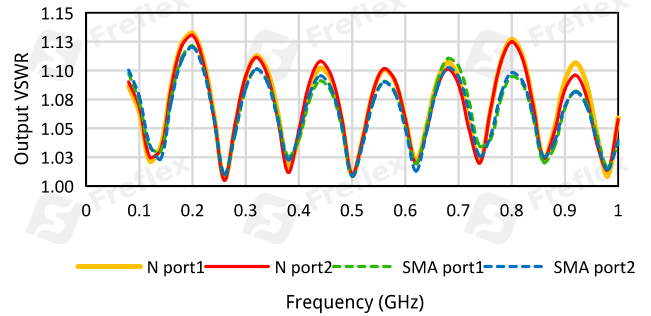
2-Way Power Dividers/Combiners

Typical Performance Curves

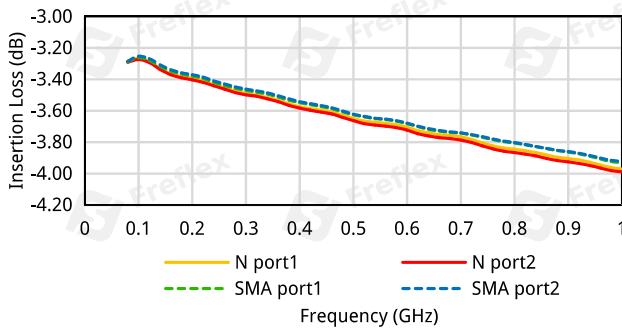
Input VSWR vs. Frequency



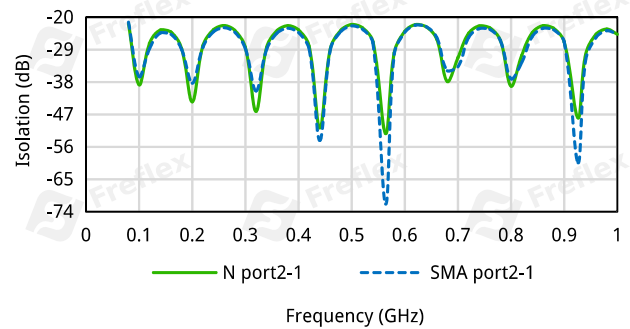
Output VSWR vs. Frequency



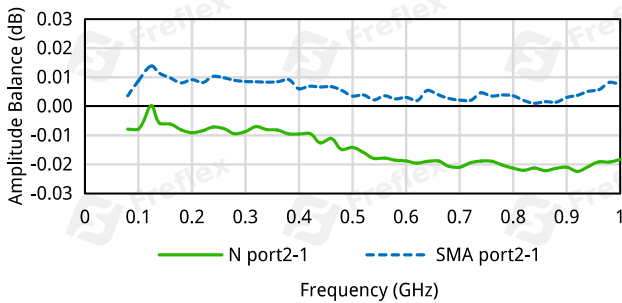
Insertion Loss vs. Frequency



Isolation vs. Frequency



Amplitude Balance vs. Frequency



Phase Balance vs. Frequency

