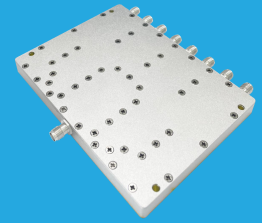


## FPD8-1000-6000-30

### 8-Way, 1~6GHz



Features:  
 \* Small Size  
 \* Low Insertion Loss

Applications:  
 \* Amplifiers  
 \* Mixers  
 \* Antennas  
 \* Laboratory Test

#### Electrical

Frequency:	1~6GHz
Insertion Loss:	2.1dB max.
Input VSWR:	1.25 max.
Output VSWR:	1.2 max.
Isolation:	20dB min.
Amplitude Balance:	±0.1dB
Phase Balance:	±3°
Impedance:	50Ω
Power @SUM Port:	30W max. as divider 2W max. as combiner

#### Mechanical

Size <sup>*1</sup> :	110*82*10mm 4.331*3.228*0.394in
Connectors <sup>*2</sup> :	SMA Female ( Passivated Stainless Steel) SMP Male
Mounting:	4-Φ3.2mm through-hole

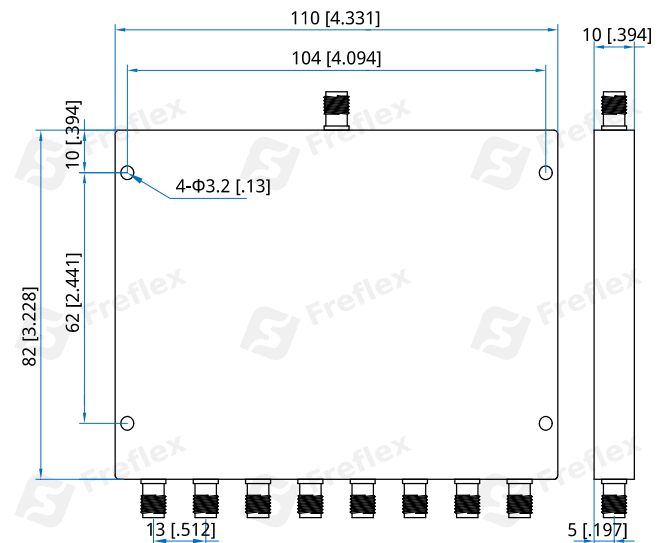
[1] Exclude connectors.

[2] Female connectors can be replaced with male connectors on request.

#### Environmental

Operation Temperature:	-45~+85°C
Non-operating Temperature:	-55~+125°C

#### Outline Drawings



Outline A

Unit: mm [in]

Tolerance: ±0.5mm [±0.02in]

#### How To Order

**FPD8-1000-6000-30-Y**

Y: Connector type

Connector naming rules:

S - SMA Female (Outline A)

P - SMP Male

Examples:

To order a 8-way power divider, 1~6GHz, 30W, SMA female, specify FPD8-1000-6000-30-S.

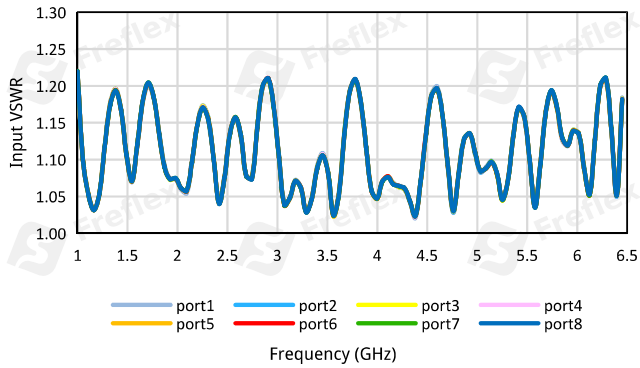
Customization is available upon request.

# 8-Way Power Divider/Combiner

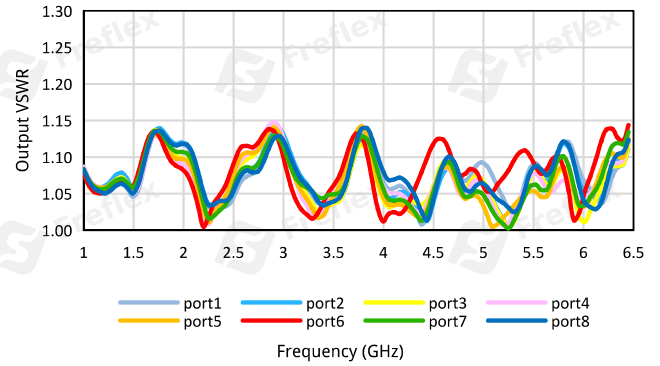
## Typical Performance Curves

### SMA

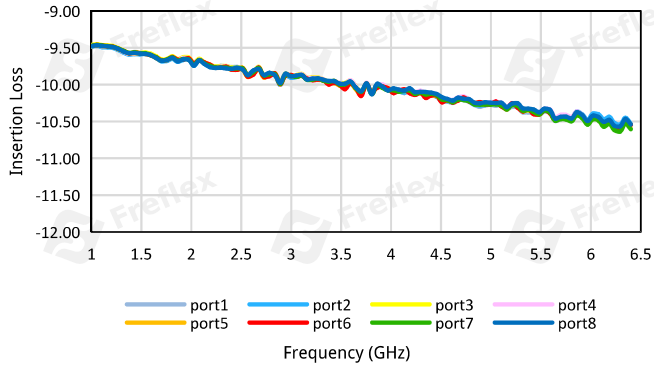
Input VSWR vs. Frequency



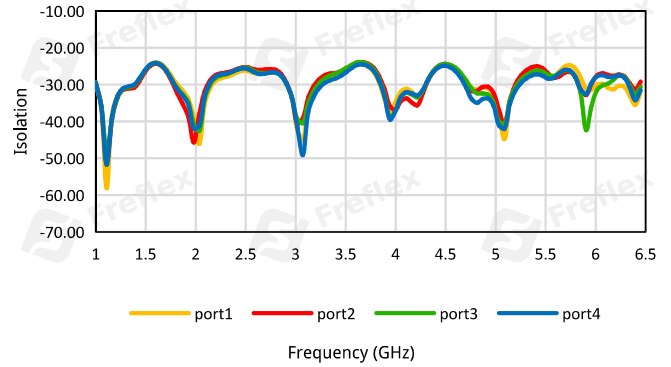
Output VSWR vs. Frequency



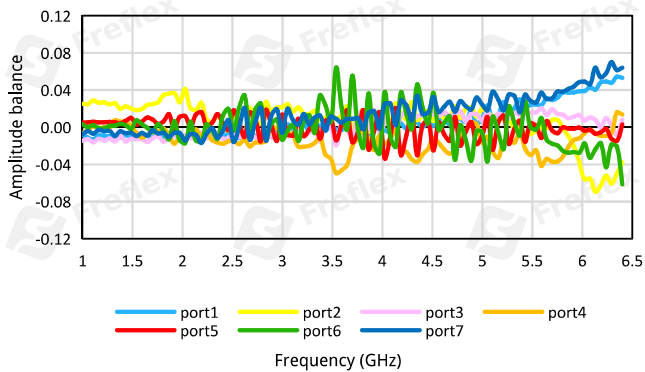
Insertion Loss vs. Frequency



Isolation vs. Frequency



Amplitude balance vs. Frequency



Phase balance vs. Frequency

