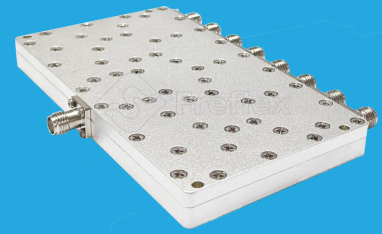


FPD8-2000-4000-K1-S

8-Way, 2~4GHz

Features:
 * Small Size
 * Low Insertion Loss

Applications:
 * Amplifiers
 * Mixers
 * Antennas
 * Laboratory Test



Electrical

Frequency:	2~4GHz
Insertion Loss ^{*1} :	0.7dB max.
Input VSWR:	1.25 max.
Output VSWR:	1.2 max.
Isolation:	25dB typ.
Amplitude Balance:	±0.2dB typ.
Phase Balance:	±3° typ.
Impedance:	50Ω
Power @SUM Port:	100W as divider 100W as combiner

[1] Excluding theoretical loss 9dB.

Mechanical

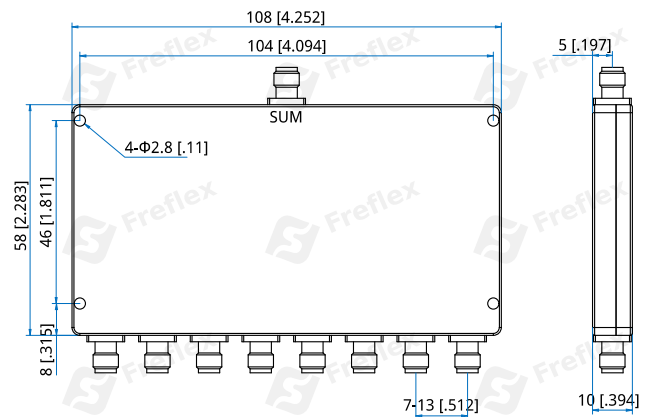
Size ^{*2} :	108*58*10mm 4.252*2.283*0.394in
Connectors:	SMA Female
Mounting:	4-Φ2.8mm through-hole

[2] Exclude connectors.

Environmental

Operation Temperature:	-45~+85°C
Non-operating Temperature:	-55~+125°C

Outline Drawings



Unit: mm [in]
 Tolerance: ±0.3mm [±0.012in]

How To Order

FPD8-2000-4000-K1-S

Customization is available upon request.

Typical Performance Curves

