

## FPD8-800-2150-K1-S

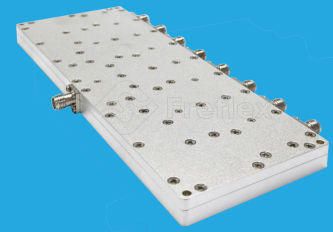
### 8-Way, 0.8~2.15GHz

**Features:**

- \* Small Size
- \* Low Insertion Loss

**Applications:**

- \* Amplifiers
- \* Mixers
- \* Antennas
- \* Laboratory Test



### Electrical

Frequency:	0.8~2.15GHz
Insertion Loss <sup>*1</sup> :	0.9dB max.
Input VSWR:	1.25 typ.
Output VSWR:	1.2 max.
Isolation:	25dB typ.
Amplitude Balance:	±0.2dB typ.
Phase Balance:	±3° typ.
Impedance:	50Ω
Power @SUM Port:	100W as divider 100W as combiner

[1] Excluding theoretical loss 9dB.

### Mechanical

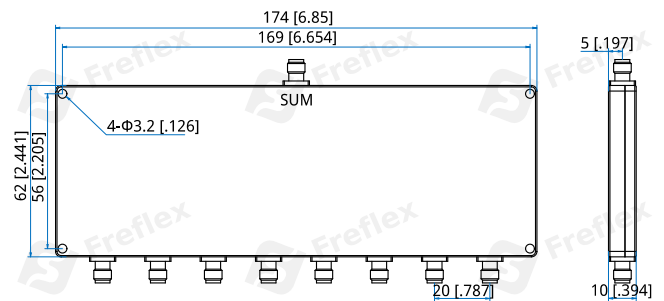
Size <sup>*2</sup> :	174*62*10mm 6.85*2.441*0.394in
Connectors:	SMA Female
Mounting:	4-Φ3.2mm through-hole

[2] Exclude connectors.

### Environmental

Operation Temperature:	-45~+85°C
Non-operating Temperature:	-55~+125°C

### Outline Drawings



Unit: mm [in]

Tolerance: ±0.3mm [±0.012in]

### How To Order

**FPD8-800-2150-K1-S**

Customization is available upon request.

## Typical Performance Curves

