

## FHC9-1.6-30-K25-N

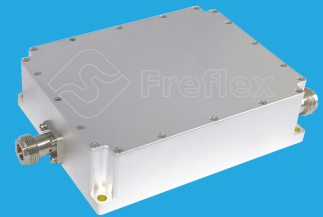
1.6~30MHz, 250W

**Features:**

- \* Broadband
- \* High Power
- \* Low Insertion Loss

**Applications:**

- \* Amplifiers
- \* Transmitter
- \* Laboratory Test
- \* Radar



### Electrical

Frequency:	1.6~30MHz
Insertion Loss:	0.6dB max.
VSWR:	1.6 max.
Isolation:	15dB min.
Amplitude Balance:	±0.8dB
Phase Balance:	90°±5°
Average Power:	250W CW
Impedance:	50Ω

### Mechanical

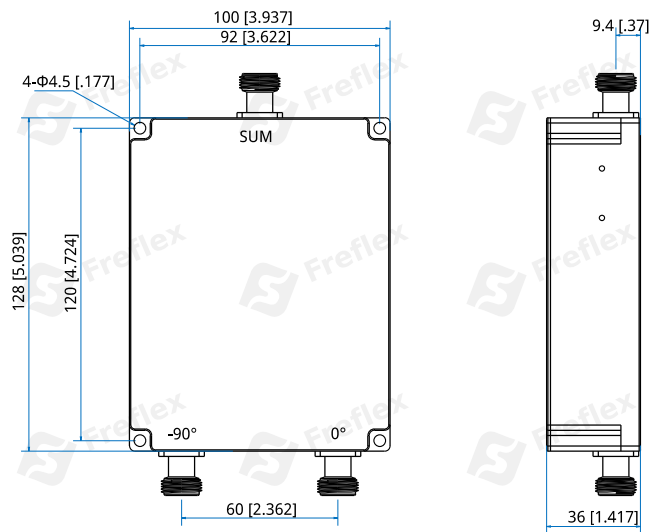
Size <sup>*1</sup> :	128*100*36mm 5.039*3.937*1.417in
RF Connectors:	N Female
Mounting:	4-Φ4.5mm through hole

[1] Exclude connectors.

### Environmental

Temperature:	-40~+70°C
--------------	-----------

### Outline Drawings



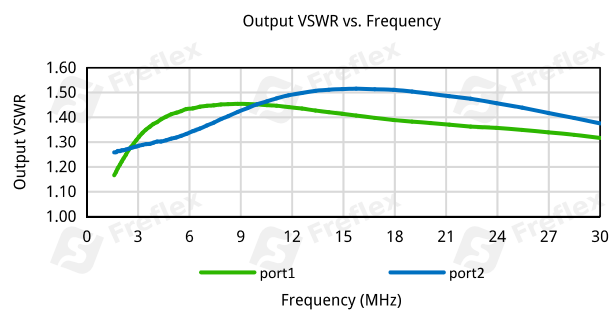
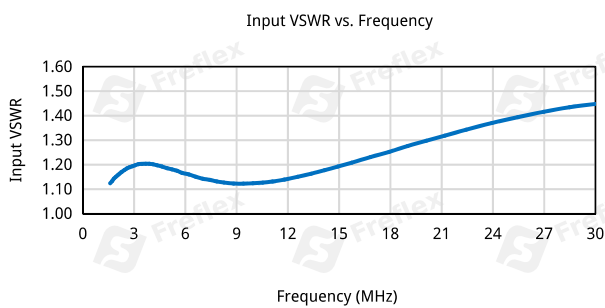
Unit: mm [in]  
Tolerance: ±0.5mm [±0.02in]

### How To Order

**FHC9-1.6-30-K25-N**

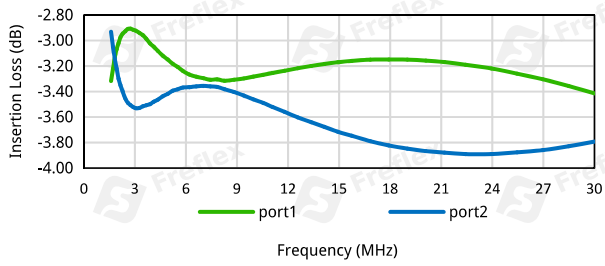
Customization is available upon request.

### Typical Performance Curves

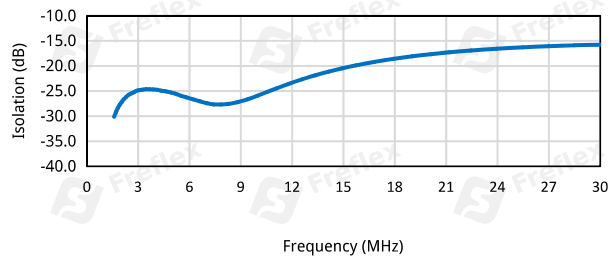


# 90 Degree Hybrid Coupler

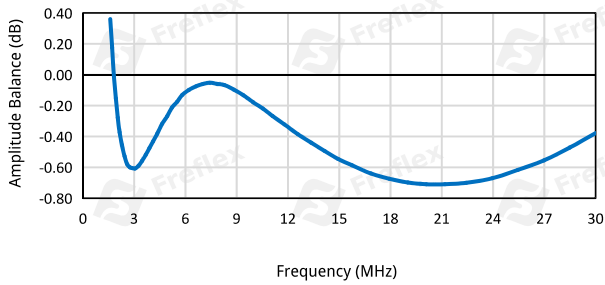
Insertion Loss vs. Frequency



Isolation vs. Frequency



Amplitude Balance vs. Frequency



Phase Balance vs. Frequency

