

FSHC9-800-4200-K1

0.8~4.2GHz, 100W

Features:

- * Broadband
- * High Power
- * Low Insertion Loss

Applications:

- * Amplifiers
- * Transmitter
- * Laboratory Test
- * Radar

Electrical

Frequency:	0.8~4.2GHz
Insertion Loss:	0.8dB max.
VSWR:	1.5 max.
Isolation:	15dB min.
Amplitude Balance:	±1dB max.
Phase Balance:	±8°
Average Power:	100W

Mechanical

Size:	45.72*10.16*4.6mm 1*0.5*0.217in
RF Connectors:	SMD

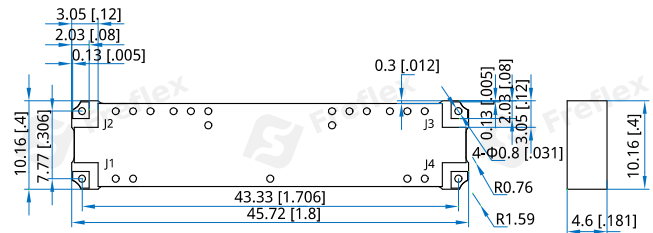
Port Configuration

Input	1	2	3	4
J1	-	-3dB (0°)	-3dB (-90°)	Isolation
J2	-3dB (0°)	-	Isolation	-3dB (-90°)
J3	-3dB (-90°)	Isolation	-	-3dB (0°)
J4	Isolation	-3dB (90°)	-3dB (0°)	-

Environmental

Operating Temperature: -55~+85°C

Outline Drawings



Unit: mm [in]

Tolerance: ±0.5mm [±0.02in]

How To Order

FSHC9-800-4200-K1

Customization is available upon request.