

FC2-ML4G-D

2.4mm Connector, DC~50GHz

Features:
* Low VSWR

Applications:
* Wireless
* Radar
* Instruments
* Electronics

Electrical

Frequency:	DC~50GHz
VSWR:	1.15 max.
Impedance of Dielectric:	3000MΩ min.
Impedance of Inner Conductor:	3mΩ max.
Impedance of Outer Conductor:	2mΩ max.
Voltage Withstand:	750V DC
Impedance:	50Ω

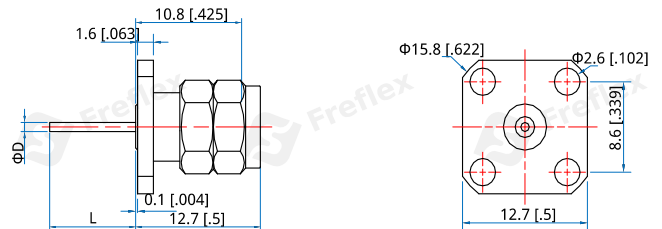
Mechanical

RF Connector:	2.4mm Male
Mating Life Cycle:	500 cycles
Outer Conductor:	Passivated SUS303 Stainless Steel
Dielectric:	PEI & PTFE or PEI
Inner Conductor:	Gold Plated Beryllium Copper

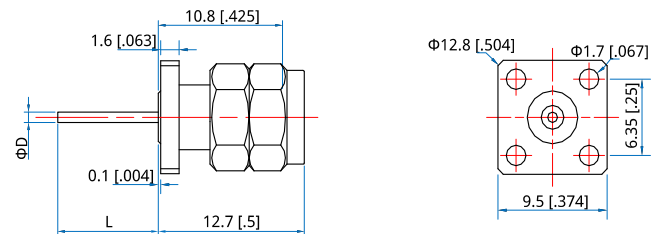
Environmental

Temperature:	-55~+165°C
--------------	------------

Outline Drawings



Part Number	ΦD	L
FC2-ML4G-D64-01	0.64 [0.025]	10 [0.394]
FC2-ML4G-D86-02	0.86 [0.034]	8.75 [0.344]



Part Number	ΦD	L
FC2-ML4G-D64-03	0.64 [0.025]	10 [0.394]
FC2-ML4G-D86-04	0.86 [0.034]	8.75 [0.344]

Unit: mm [in]
Tolerance: ±0.2mm [±0.008in]