

# FCPL-MO-M

## SMP Connector, DC~40GHz

Features:  
\* Low VSWR

Applications:  
\* Wireless  
\* Radar  
\* Instruments  
\* Electronics

### Electrical

Frequency: DC~40GHz  
VSWR: 1.25 max.  
Impedance: 50Ω

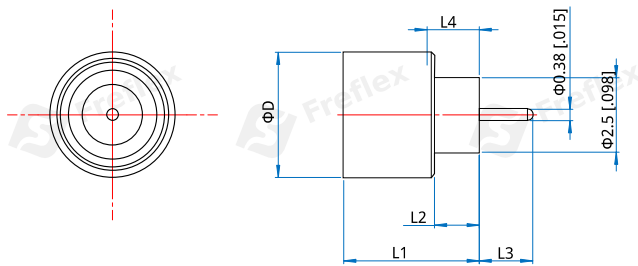
### Environmental

Temperature: -55~+165°C

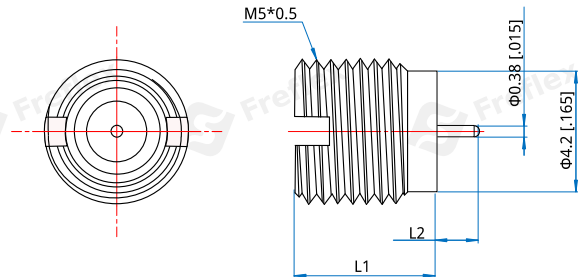
### Mechanical

RF Connector: SMP male  
Mating Life Cycle: 500 cycles  
Detent mode: Limited Detent  
Body: Kovar, Gold plated keval 4J29  
Dielectric: 7070 glass sintering  
Center Conductor: Kovar, Gold plated keval 4J29

### Outline Drawings



Outline A



Outline B

Unit: mm [in]

Tolerance: ±0.2mm [±0.008in]

Part Number	ΦD	L1	L2	L3	L4	Outline Drawings	Material
FCPL-MO-M38-01	4.2 [.165]	4.55 [.179]	1.5 [.059]	1.8 [.071]	1.75 [.069]	Outline A	Kovar
FCPL-MO-M38-02	3.7 [.146]	3.6 [.142]	1.5 [.059]	2.8 [.11]	1.9 [.075]	Outline A	Kovar
FCPL-MO-M38-03	3.7 [.146]	3.6 [.142]	1.6 [.063]	1.6 [.063]	-	Outline A	Kovar
FCPL-MO-M38-04	-	4.9 [.193]	1.5 [.059]	-	-	Outline B	Kovar
FCPL-MO-M38-05	-	4.9 [.193]	3.5 [.138]	-	-	Outline B	Kovar
FCPL-MO-M38-06	3.7 [.146]	3.1 [.146]	1 [.039]	1.3 [.051]	-	Outline A	4J29