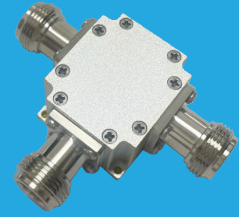


# FBT-10-4200-N

## 0.01~4.2GHz

Features:  
 \* Broadband  
 \* Small Size

Applications:  
 \* Telecom  
 \* Satcom  
 \* Laboratory Test  
 \* Instrumentation



### Electrical

Frequency:	0.01~4.2GHz
Insertion Loss:	0.8dB max.
VSWR:	1.25 max.
Voltage:	+72V DC
Current:	2.5A max.
RF Input Power:	5W max.
Impedance:	50Ω

### Mechanical

Connectors:	N female N male
Mounting:	4-Φ2.2mm through-hole

### How To Order

#### FBT-X-Y-N-Z

X: Start frequency in MHz

Y: Stop frequency in MHz

- Z: 01 N(f) to N(f), DC in Pin (Outline A)  
 02: N(f) to N(f), DC in N female (Outline B)  
 03: N(m) to N(f), DC in Pin (Outline C)  
 04: N(m) to N(f), DC in N female (Outline D)

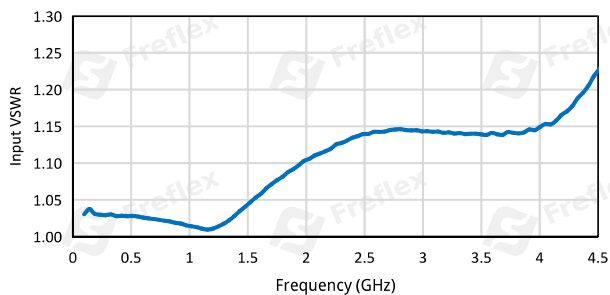
Examples:

To order a bias tee, 0.01~4.2GHz, N female to N female, DC in N female, specify FBT-10-4200-N-02.

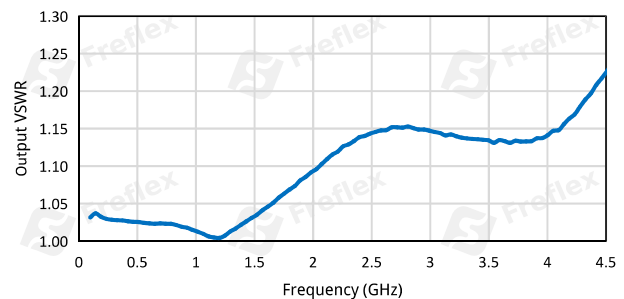
Customization is available upon request.

### Typical Performance Curves

Input VSWR vs. Frequency



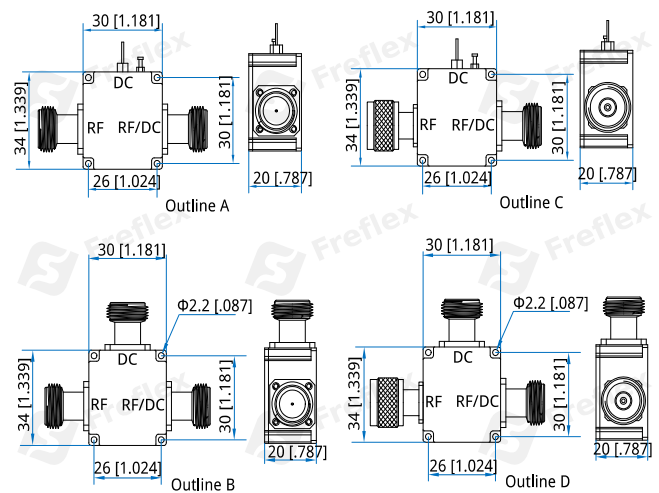
Output VSWR vs. Frequency



### Environmental

Operating Temperature:	-40~+65°C
Non-operating Temperature:	-55~+85°C

### Outline Drawings



Unit: mm [in]

Tolerance: ±0.5mm [±0.02in]

