

## FCT1807

### DC~18GHz, 7W

Features:  
 \* Low VSWR  
 \* Broadband

Applications:  
 \* Transmitters  
 \* Antennas  
 \* Laboratory Test  
 \* Impedance Matching

#### Electrical

Frequency Range:	DC~18GHz
Average Power <sup>*1</sup> :	7W
Impedance:	50Ω
VSWR:	1.4 max. 1.5 max. (Outline A)

[1] Derated linearly to 0.7W@125°C.

#### Mechanical

Size:	10*14.5*7 0.394*0.571*0.276in
Connectors:	SMP Male SMP Female

#### Environmental

Temperature:	-55~+125°C
--------------	------------

#### How To Order

##### FCT1807-X-Y

X: Frequency in GHz

Y: Connector type

Connector naming rules:

P - SMP male (Outline A)

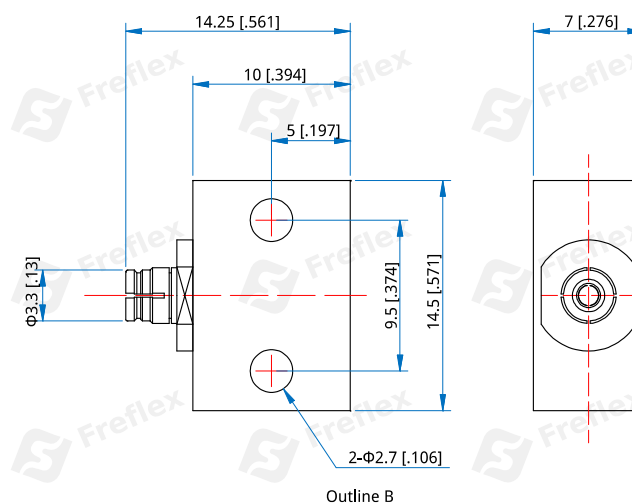
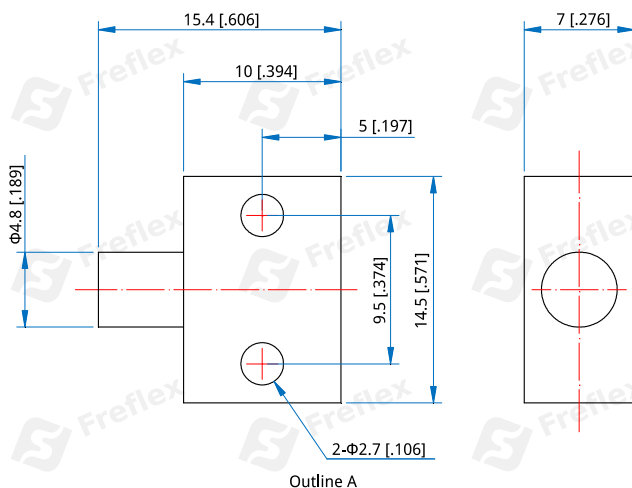
PF - SMP female (Outline B)

Examples:

To order a termination, DC-18GHz, SMP male, specify FCT1807-18-P.

Customization is available upon request.

#### Outline Drawings



Unit: mm [in]  
 Tolerance: ±3%