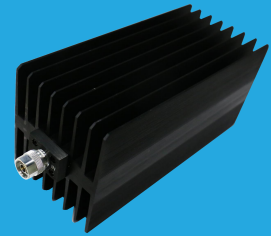


# FCT18K2

## DC~18GHz, 200W

Features:  
 \* Low VSWR  
 \* Broadband

Applications:  
 \* Transmitters  
 \* Antennas  
 \* Laboratory Test  
 \* Impedance Matching



### Electrical

Frequency Range:	DC~18GHz
Average Power*1:	200W@25°C
Impedance:	50Ω
Peak Power:	5KW (5μS pulse width, 2% duty cycle) @DC~12.4GHz 1KW (5μS pulse width, 10% duty cycle) @18GHz

[1] Derated linearly to 10W@120°C.

### VSWR

Frequency (GHz)	VSWR (max.)
DC~4	1.2
DC~8	1.25
DC~12.4	1.35
DC~18	1.4

### Mechanical

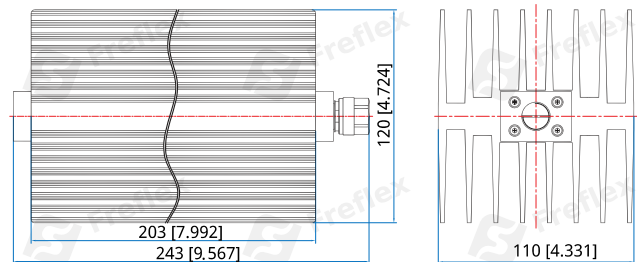
Size*2:	203*110*120mm 7.992*4.331*4.724in
Connector:	N Male

[2] Exclude connectors.

### Environmental

Temperature:	-55~+125°C
--------------	------------

### Outline Drawings



Unit: mm [in]  
 Tolerance: ±1mm [±0.04in]

### How To Order

**FCT18K2-X-Y**

X: Frequency in GHz

Y: Connector type

Connector naming rules:

N - N

Examples:

To order a termination, DC-18GHz, N male, specify FCT18K2-18-N

Customization is available upon request.