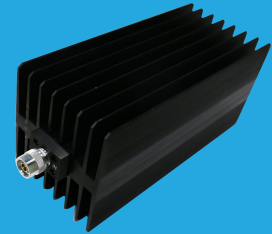


FCT18K25

DC~18GHz, 250W

Features:
 * Low VSWR
 * Broadband

Applications:
 * Transmitters
 * Antennas
 * Laboratory Test
 * Impedance Matching



Electrical

Frequency Range:	DC~18GHz
Average Power*1:	250W@25°C
Impedance:	50Ω
Peak Power:	5KW (5μS pulse width, 2.5% duty cycle) @DC~12.4GHz 1KW (5μS pulse width, 12.5% duty cycle) @18GHz

[1] Derated linearly to 12.5W@120°C.

VSWR

Frequency (GHz)	VSWR (max.)
DC~4	1.2
DC~8	1.25
DC~12.4	1.35
DC~18	1.45

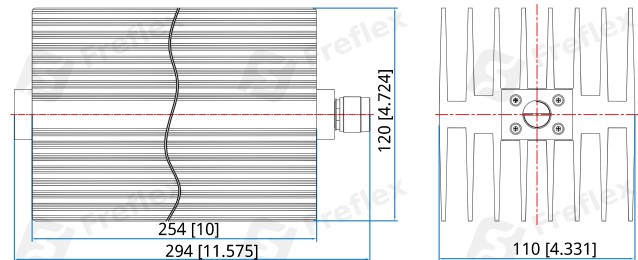
Mechanical

Size:	294*110*120mm 11.575*4.331*4.724in
Connector:	N

Environmental

Temperature:	-55~+125°C
--------------	------------

Outline Drawings



Unit: mm [in]
 Tolerance: ±1mm [±0.04in]

How To Order

FCT18K25-X-Y

X: Frequency in GHz

Y: Connector type

Connector naming rules:

N - N Male

NF - N Female

Examples:

To order a termination, DC-18GHz, N male, specify FCT18K25-18-N

Customization is available upon request.