

## FDLVA-100-20000-60-30

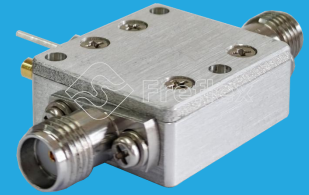
0.1~20GHz, 60dB, 30mV/dB

### Features:

- \* Small Size
- \* Low Power Consumption

### Applications:

- \* Wireless
- \* Transmitter
- \* Laboratory Test



### Electrical

Frequency:	0.1~20GHz
Dynamic Range:	60dB typ.
TSS:	-52dBm
Log Slope:	30mV/dB typ.
Log Linearity:	±3dB typ.
VSWR:	2 typ.
Rise Time*1:	10ns typ.
Recovery Time*2:	10ns typ.
Video Output Range:	0.9~2.6V DC
Power Supply Voltage:	+5V DC
Current:	80mA typ.
Video Load:	1KΩ min.

[1] From 10% to 90% @ -10 dBm.

[2] From 90% to 10% @ -10 dBm.

### Absolute Maximum Ratings\*3

Input Power:	+15dBm
Power Supply Voltage:	+6V

[3] Permanent damage may occur if any of these limits are exceeded.

### Mechanical

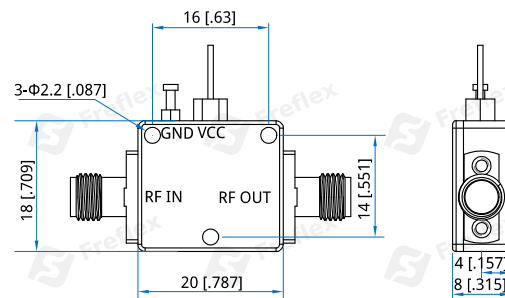
Size*4:	20*18*8mm 0.787*0.709*0.315in
RF Connectors:	SMA Female (Removable)
Mounting:	3-Φ2.2mm through-hole

[4] Exclude connectors.

### Environmental

Operating Temperature:	-45~+85°C
Non-operating Temperature:	-55~+125°C

### Outline Drawings



Unit: mm [in]

Tolerance: ±0.2mm [±0.08in]

### How To Order

**FDLVA-100-20000-60-30**

Customization is available upon request.

## Typical Performance Curves

