

FDDCC-26300-40000

26.3~40GHz

Features:

- * Broadband
- * High Power
- * Low Insertion Loss

Applications:

- * Amplifiers
- * Transmitter
- * Laboratory Test
- * Radar

Electrical

Frequency: 26.3~40GHz
 Power Handling: 0.036MW

Coupling (dB)	VSWR (Mainline) (max.)	VSWR (Coupling) (max.)	Directivity (dB min.)
20±1.5	1.1	1.3	15
30±1.5	1.1	1.35	16

Mechanical

Interface: WR-28 (BJ320)
 Flange: FBP320
 Material: Aluminium
 Finish: Conductive oxidation
 Coating: Black paint

Environmental

Operating Temperature: -40~+125°C

How To Order

FDDCC-26300-40000-W-X-Y-Z

W: Coupling:
 20dB - Outline A
 30dB - Outline B
 X: Coupling Connector type
 Y: Material
 Z : Flange type

Connector naming rules:
 K - 2.92mm female (Outline A, B)

Material naming rules:
 A - Aluminium (Outline A, B)

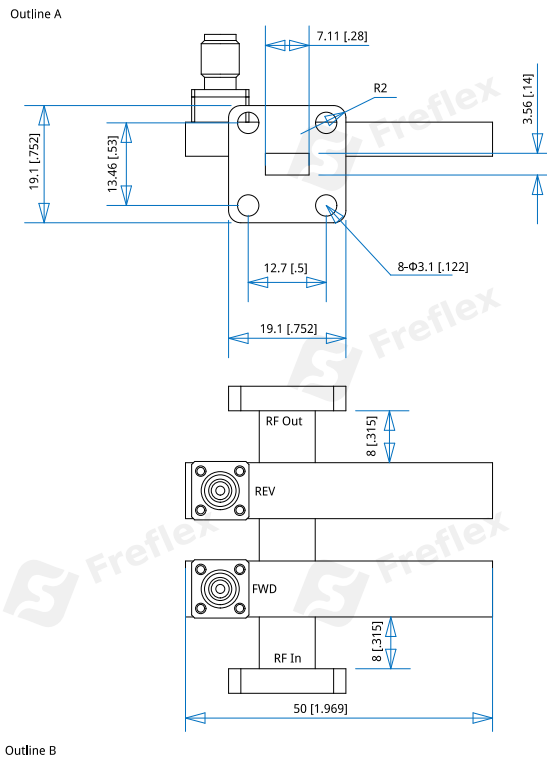
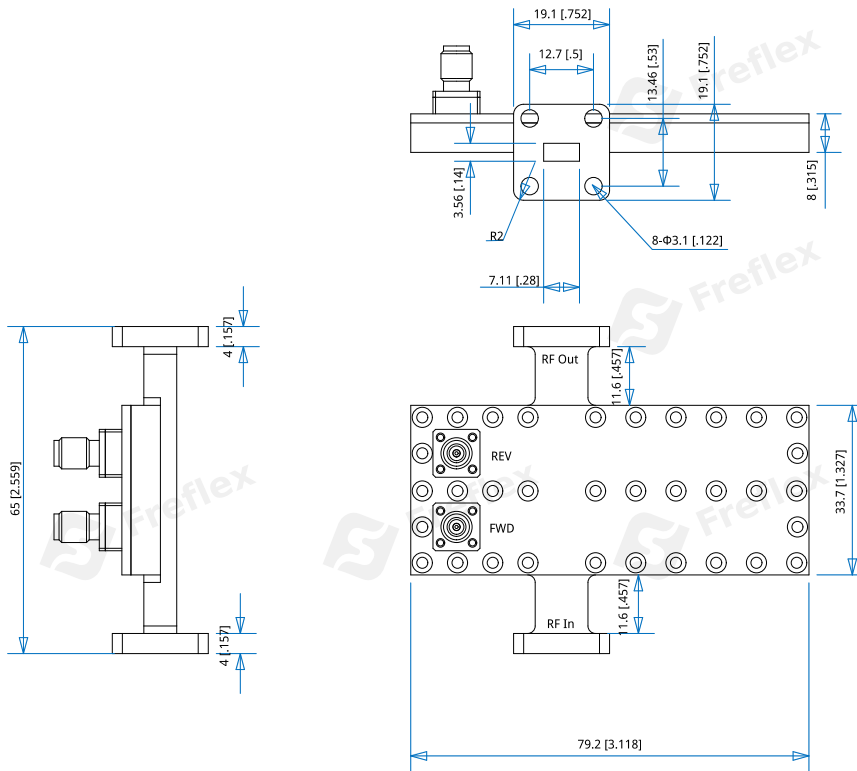
Flange naming rules:
 1 - FBP (Outline A, B)

Examples:
 To order a Dual Directional Crossguide Coupler, 26.3~40GHz, 20dB, 2.92mm female, Aluminium, FBP320, specify FDDCC-26300-40000-20-K-A-1.

Customization is available upon request.

Dual Directional Crossguide Couplers

Outline Drawings



Unit: mm [in]
 Tolerance: ±0.2mm [±0.008in]