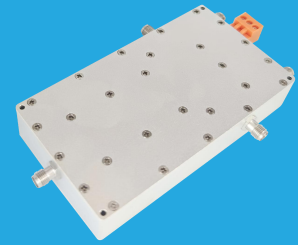


FIMA-VA-S-0.1-500

0.1~500MHz

Features:
 * Broad Band
 * Low Noise

Applications:
 * Wireless
 * Receiver
 * Laboratory Test
 * Radar



Electrical

Frequency:	0.1~500MHz
Insertion Loss:	5dB typ.
Isolation:	80dB typ.
Attenuation Range:	0~50dB
VSWR:	2 typ.
Switch Time:	100ns max.
Impedance:	50Ω
Supply Voltage:	+5V DC
Current:	100mA typ.
Control:	TTL High - 1 TTL Low/NC - 0

Absolute Maximum Ratings^{*1}

RF Input Power:	18dBm
Voltage:	-0.5~+7V

[1] Permanent damage may occur if any of these limits are exceeded.

Mechanical

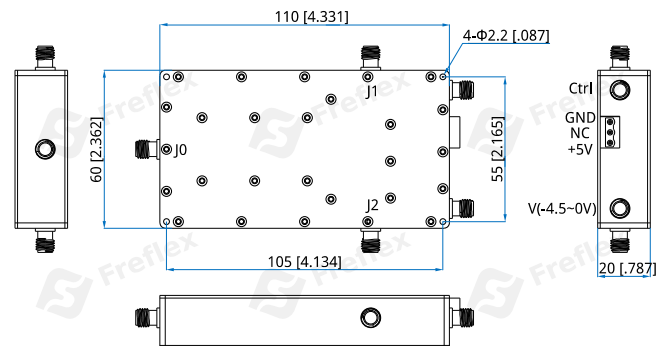
Size ^{*1} :	110*60*20mm 4.331*2.362*0.787in
RF Connectors:	SMA Female
Mounting:	4-Φ2.2mm through-hole

[1] Exclude connectors.

Environmental

Operating Temperature:	-35~+75°C
Non-operating Temperature:	-45~+85°C

Outline Drawings



Unit: mm [in]

Tolerance: ±0.5mm [±0.02in]

Pin Numbering

Pin	Function
Ctrl	TTL High - 1 (J0~J2)
GND	TTL Low/NC - 0 (J0~J1)
NC	GND
+5V	No Connection
V	Power Supply
	Attenuation Control Voltage: -4.5~0V

How To Order

FIMA-VA-S-0.1-500

Customization is available upon request.

Typical Performance Curves

