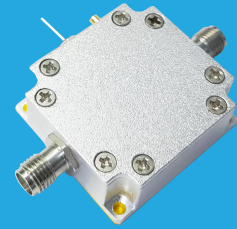


FLA-2-1100-22-15

2~1100MHz, 22dB, 1.5dB

Features:
 * Broad Band
 * Low Noise

Applications:
 * Wireless
 * Receiver
 * Laboratory Test
 * Radar



Electrical

Frequency:	2~1100MHz
Gain:	22dB typ.
Noise Figure:	1.5dB typ.
Output Power (P1dB):	26dBm typ.
Input VSWR:	1.4 typ.
Output VSWR:	1.4 typ.
Voltage/Current:	+8V/300mA
Impedance:	50Ω

Absolute Maximum Ratings*1

RF Input Power:	+10dBm
Voltage:	+10V
Limiting Temperature:	-40~+85°C

[1] Permanent damage may occur if any of these limits are exceeded.

Mechanical

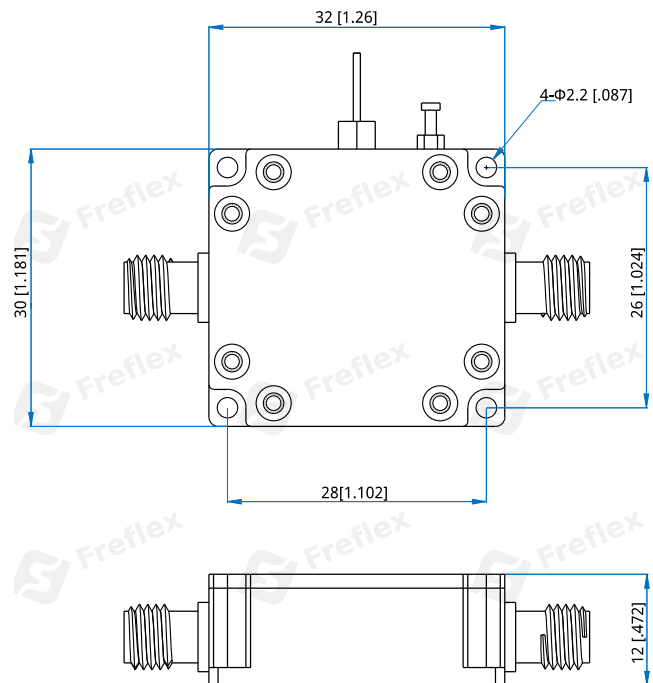
Size*2:	32*30*12mm 1.26*1.181*0.472in
RF Connectors:	SMA female
Power Supply Connectors:	Feed Through/Terminal Post
Mounting:	4-Φ2.2mm through-hole

[2] Exclude connectors.

Environmental

Operating Temperature:	-40~+70°C
Non-operating Temperature:	-55~+100°C

Outline Drawings



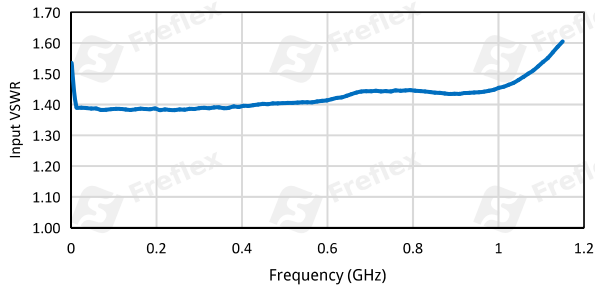
Unit: mm [in]
 Tolerance: ±0.2mm [±0.008in]

How To Order
FLA-2-1100-22-15

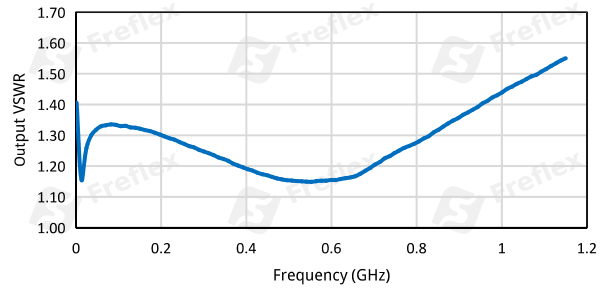
Customization is available upon request.

Typical Performance Curves

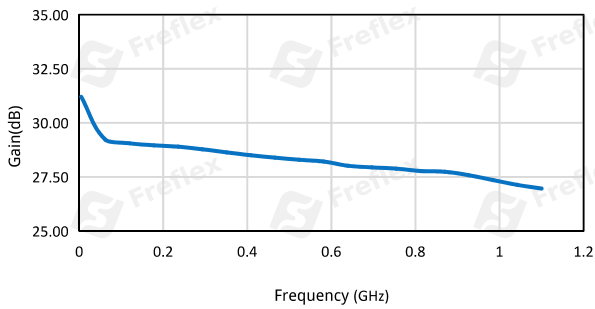
Input VSWR vs. Frequency



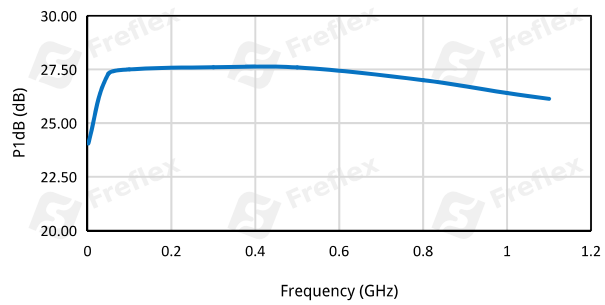
Output VSWR vs. Frequency



Gain vs. Frequency



P1dB vs. Frequency @Input Power=6dBm



Noise Figure vs. Frequency

