

FWT6-R5

WR-6, 0.5W

Features:
 * Low VSWR
 * Broadband

Applications:
 * Transmitters
 * Antennas
 * Laboratory Test
 * Impedance Matching

Electrical

Frequency:	110~170GHz
Average Power	0.5W max.
VSWR:	1.06 max.

Mechanical

Interface: WR-6

Environmental

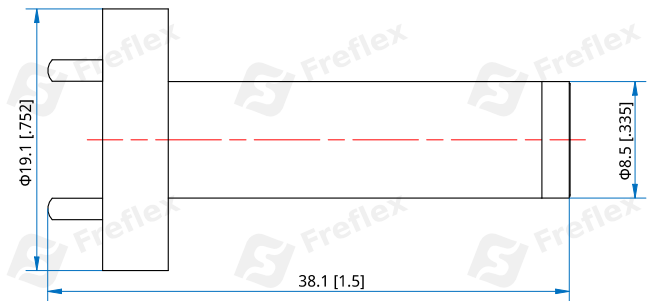
Operation Temperature:	0~+40°C
No-Operation Temperature:	-40~+70°C

How To Order

FWT6-R5

Customization is available upon request.

Outline Drawings



Unit: mm [in]

Tolerance: $\pm 0.5\text{mm}$ [$\pm 0.02\text{in}$]