

FRHA19

39.2~59.6GHz, WR-19

Features:
* Broadband

Applications:
* Wireless
* Transceiver
* Laboratory Test
* Broadcast

Electrical

Frequency: 39.2~59.6GHz
Gain: 10, 15, 20, 25dB min.
VSWR: 1.2 max. (Outline A, B, C, D)
1.3 max.

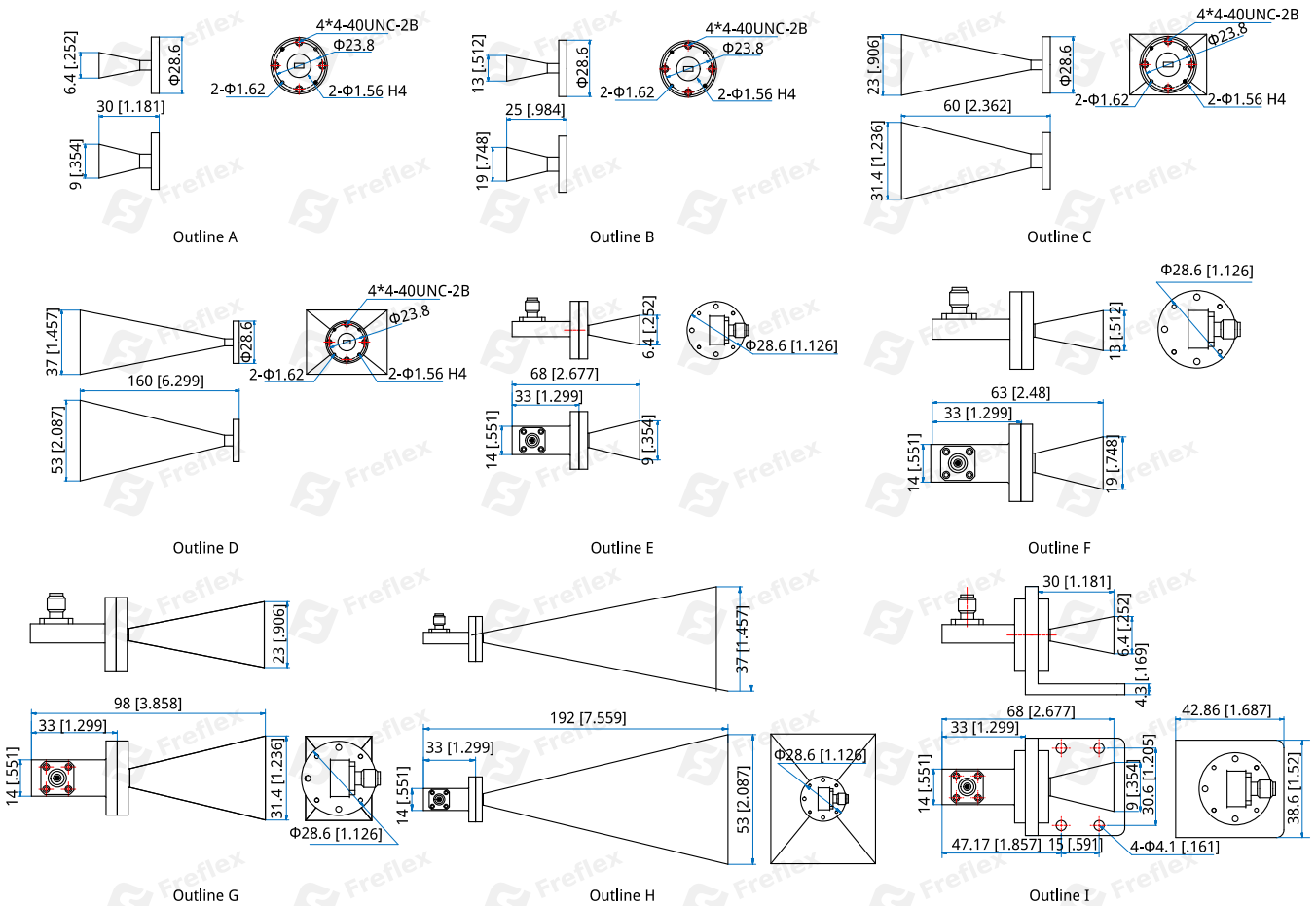
Mechanical

Interface: WR-19 (BJ500)
Flange: UG383/UM
Material: Brass

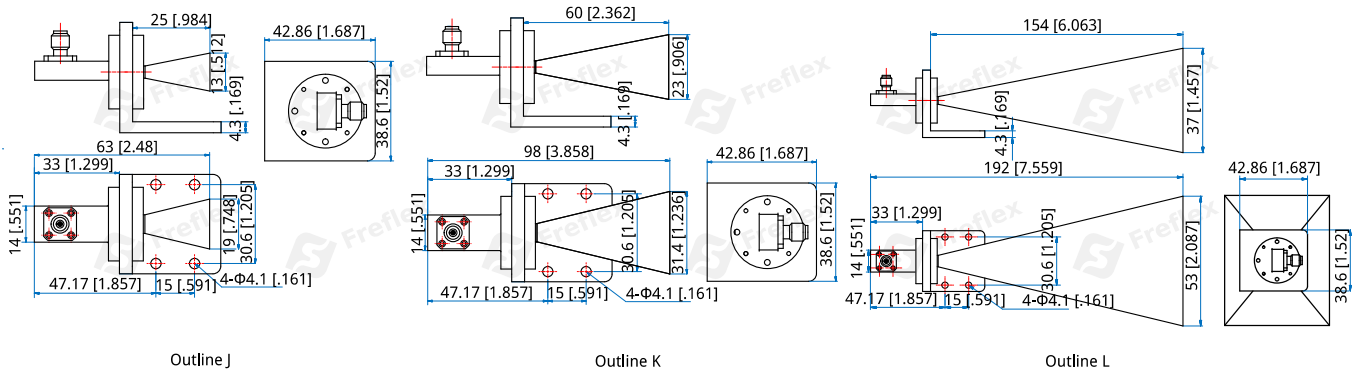
Environmental

Temperature: -55~+165°C

Outline Drawings



Standard Gain Horn Antennas



Unit: mm [in]
Tolerance: ±0.5mm [±0.02in]

How To Order

FRHA19-X-Y-Z

- X: Gain in dB
 - 10dB - Outline A, E, I
 - 15dB - Outline B, F, J
 - 20dB - Outline C, G, K
 - 25dB - Outline D, H, L
- Y: Connector type if applicable
- Z: Installation method if applicable

Panel Mount naming rules:

P - Panel Mount (Outline I, J, K, L)

Examples:

To order an antenna, 39.2~59.6GHz, 15dB, WR-19, 1.85mm female, Panel Mount, specify FRHA19-15-V-P.

Customization is available upon request.

Connector naming rules:

V - 1.85mm Female (Outline E, F, G, H, I, J, K, L)