

FCPL-ML20-M38-01

SMP Connector, DC~35GHz

Features:
* Low VSWR

Applications:
* Wireless
* Radar
* Instruments
* Electronics

Electrical

Frequency: DC~35GHz
Impedance of Dielectric: 5000M Ω min.
Voltage Withstand*1: 500V
Impedance: 50 Ω

[1] 50Hz, AC RMS, at sea level.

Mechanical

RF Connector: SMP male
Mating Life Cycle: 500 cycles
Detent Mode: Limited detent
Outer Conductor: Gold-plated and nickel-plated kovar alloy (4J29)
Dielectric: Glass
Inner Conductor: Gold-plated and nickel-plated kovar alloy (4J29)

Environmental

Temperature: -65~+165°C
Seal: 1.013*10⁻³ Pa.cm³/s (He) max.
Salt Fog*2: 48h min.

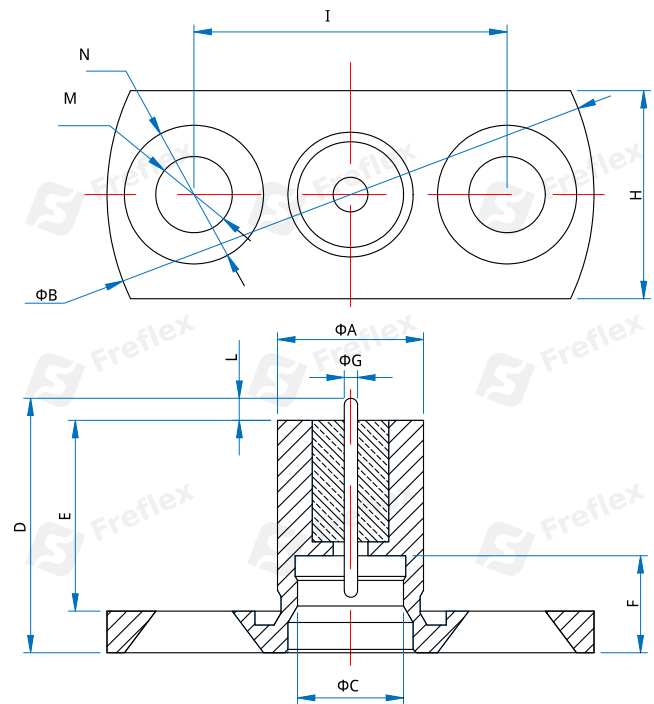
[2] According to customer requirements, it can reach 96 hours.

How To Order

FCPL-ML20-M38-01

Customization is available upon request.

Outline Drawings



Unit: mm [in]

Tolerance: ±0.2mm [±0.008in]

A	B	C	D	E	F	G	L	H	I	M	N
4.2	14	3.05	6.7	5.5	2.8	0.38	0.1	6	9	2.2	4
[.165]	[.551]	[.12]	[.264]	[.217]	[.11]	[.015]	[.004]	[.236]	[.354]	[.087]	[.157]