

# FCPS-ML20-M38-01

## SMP Connector, DC~35GHz

Features:  
\* Low VSWR

Applications:  
\* Wireless  
\* Radar  
\* Instruments  
\* Electronics

### Electrical

Frequency: DC~35GHz  
Impedance of Dielectric: 5000MΩ min.  
Voltage Withstand\*1: 500V  
Impedance: 50Ω

[1] 50Hz, AC RMS, at sea level.

### Mechanical

RF Connector: SMP male  
Mating Life Cycle: 1000 cycles  
Detent Mode: Smooth bore  
Outer Conductor: Gold-plated and nickel-plated kovar alloy (4J29)  
Dielectric: Glass  
Inner Conductor: Gold-plated and nickel-plated kovar alloy (4J29)

### Environmental

Temperature: -65~+165°C  
Seal:  $1.013 \times 10^{-3}$  Pa.cm<sup>3</sup>/s (He) max.  
Salt Fog\*2: 48h min.

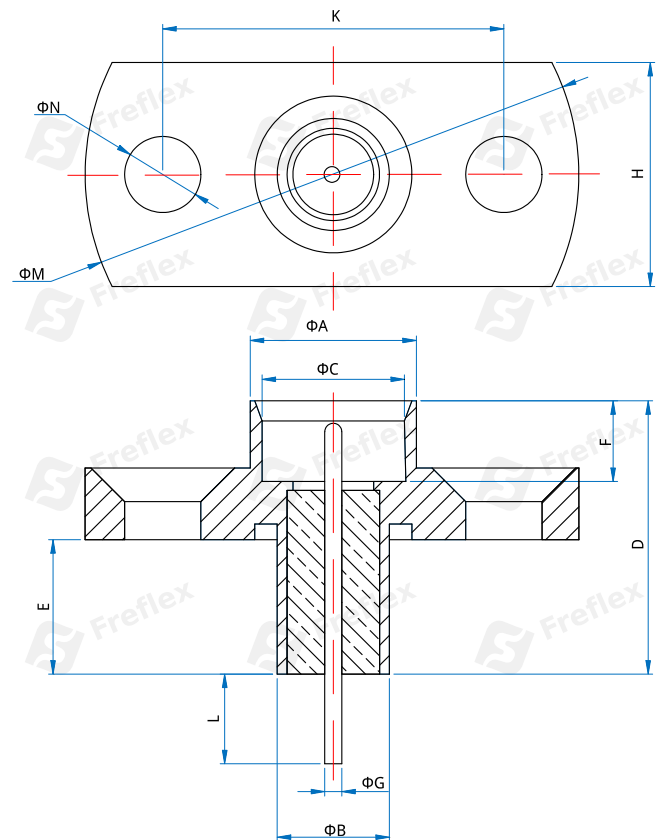
[2] According to customer requirements, it can reach 96 hours.

### How To Order

**FCPS-ML20-M38-01**

Customization is available upon request.

### Outline Drawings



Unit: mm [in]

Tolerance: ±0.2mm [±0.008in]

A	B	C	D	E	F	G	L	H	M	N	K
3.7	2.5	3.17	6.1	3	1.8	0.38	2	5	11	1.7	7.6
[.146]	[.098]	[.125]	[.24]	[.118]	[.071]	[.015]	[.079]	[.197]	[.433]	[.067]	[.299]