

FCPS-MYO-M

SMP Connector, DC~35GHz

Features:
* Low VSWR

Applications:
* Wireless
* Radar
* Instruments
* Electronics

Electrical

Frequency: DC~35GHz
Impedance of Dielectric: 5000MΩ min.
Voltage Withstand*1: 500V
Impedance: 50Ω

[1] 50Hz, AC RMS, at sea level.

Environmental

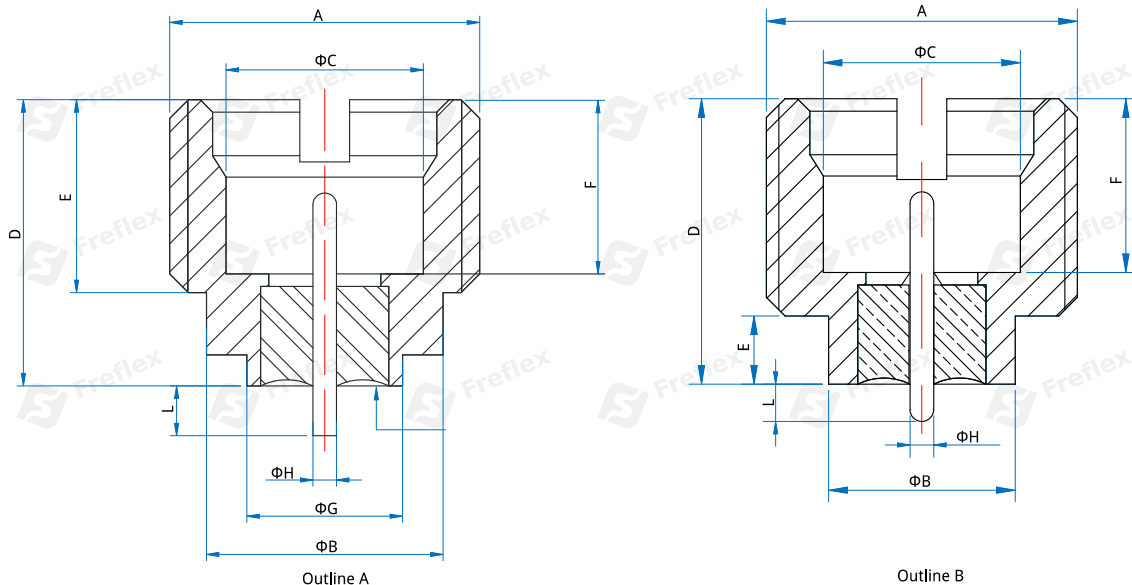
Temperature: -65~+165°C
Seal: 1.013*10⁻³ Pa.cm³/s (He) max.
Salt Fog*2: 48h min.

[2] According to customer requirements, it can reach 96 hours.

Mechanical

RF Connector: SMP male
Mating Life Cycle: 1000 cycles
Detent Mode: Smooth bore
Outer Conductor: Gold-plated and nickel-plated kovar alloy (4J29)
Dielectric: Glass
Inner Conductor: Gold-plated and nickel-plated kovar alloy (4J29)

Outline Drawings



Unit: mm [in]

Tolerance: ±0.2mm [±0.008in]

Part Number	A	B	C	D	E	F	G	H	L	Outline Drawings
FCPS-MYO-M38-01	M5*0.5-6g	3.8 [.15]	3.17 [.125]	4.6 [.181]	3.1 [.122]	2.79 [.11]	2.5 [.098]	0.38 [.015]	0.8 [.031]	Outline A
FCPS-MYO-M38-02	M5*0.5-6g	4.3 [.169]	3.18 [.125]	3.9 [.154]	2.7 [.106]	2.8 [.11]	2.8 [.11]	0.38 [.015]	1.2 [.047]	Outline A
FCPS-MYO-M38-03	M5*0.5-6g	3.8 [.15]	2.5 [.098]	4.6 [.181]	3.1 [.122]	2.8 [.11]	2.5 [.098]	0.38 [.015]	1.3 [.051]	Outline A
FCPS-MYO-M38-04	M5*0.5-6g	3 [.118]	3.17 [.125]	4.6 [.181]	1.1 [.043]	2.8 [.11]	-	0.38 [.015]	0.6 [.024]	Outline B