

FSM-0-18000-4-24-1

4-SP6T, 0~18GHz

Features:

- * Low Insertion Loss
- * High Isolation

Applications:

- * Wireless
- * Transmitter
- * Laboratory Test
- * Radar

Description

This switch matrix consists of four independent SP6T coaxial switches, SP6T can achieve 1 input and 6 output (or 6 input and 1 output).

Electrical

Frequency:	0~18GHz
Insertion Loss:	0.5dB max.
Isolation:	60dB typ.
VSWR:	1.5 max.
Voltage:	+80~270V AC
Impedance:	50Ω

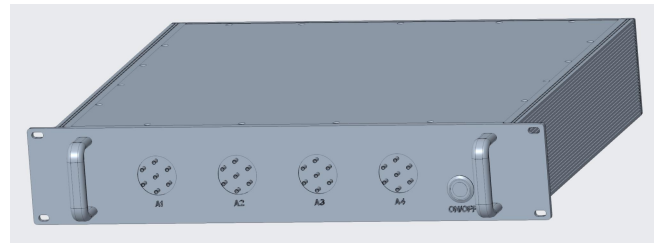
Mechanical

Size*1:	482*393*88mm 18.976*15.472*3.465in
RF Connectors:	SMA Female
Power Supply Connectors:	Feed Through/Terminal Post
Control Interface:	LAN

[1] Exclude connectors.

Environmental

Operating Temperature:	-25~+65°C
------------------------	-----------

Outline Drawings


Unit: mm [in]

Tolerance: ±0.2mm [±0.008in]

How To Order

FSM-0-18000-4-24-1

Customization is available upon request.