

FSM-0-X-1-2-1

SPDT, DC~67GHz

Features:

- * Low Insertion Loss
- * High Isolation

Applications:

- * Wireless
- * Transmitter
- * Laboratory Test
- * Radar

Description

This switch matrix consists of one independent SPDT coaxial switches, SPDT can achieve 1 input and 2 output (2 input and 1 output).

Electrical

Frequency: DC~67GHz
 Voltage: +80~270V AC
 Impedance: 50Ω

Frequency (GHz)	Insertion Loss (dB)	VSWR	Isolation (dB)	RF Connectors
DC~18	0.5	1.4	60	SMA
DC~26.5	0.6	1.6	55	SMA
DC~40	0.8	1.8	50	2.92mm
DC~50	0.9	1.9	45	2.4mm
DC~67	1.2	2.2	40	1.85mm

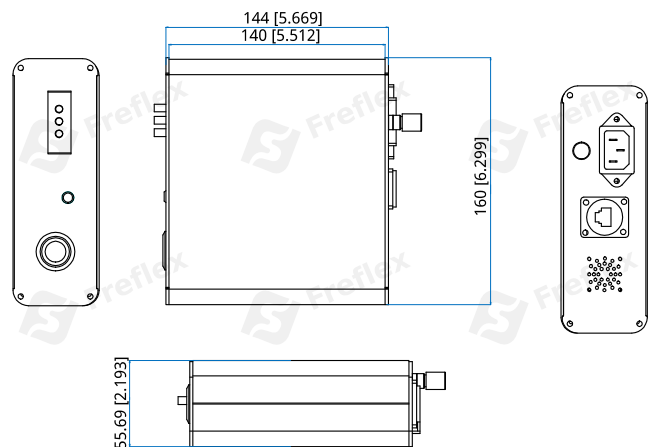
Mechanical

Size*1: 144x160x55.69mm
 5.669*6.299*2.193in
 RF Connectors: SMA Female, 2.92mm Female,
 2.4mm Female, 1.85mm Female
 Power Supply Connectors: Three-phase plugs
 Control Interface: LAN
 Indicator Lights: On the front panel

[1] Exclude connectors.

Environmental

Operating Temperature: -25~+65°C

Outline Drawings


Unit: mm [in]
 Tolerance: ±0.5mm [±0.02in]

How To Order
FSM-0-X-1-2-1

X: Stop frequency (MHz):

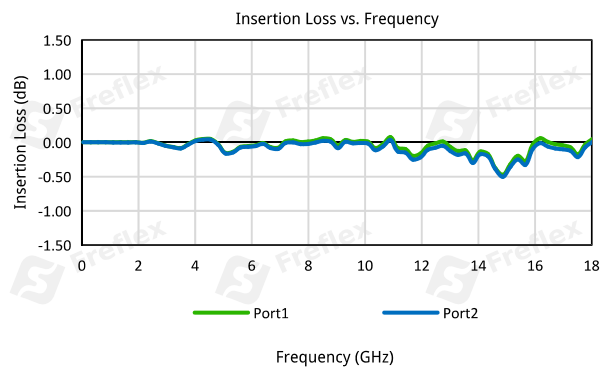
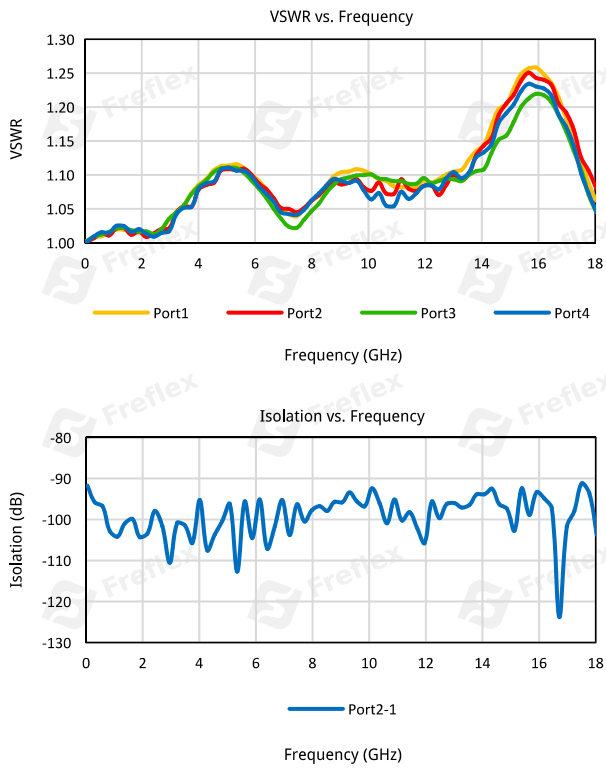
- 18000 - 18GHz
- 26500 - 26.5GHz
- 40000 - 40GHz
- 50000 - 50GHz
- 67000 - 67GHz

Examples:

To order a Switch Matrix, DC~18GHz, SPDT, SMA Female, specify FSM-0-18000-1-2-1.

Customization is available upon request.

Typical Performance Curves DC~18GHz:



DC~26.5GHz:

