

## FWC-32000-36000-K2

### 32~36GHz

**Features:**

- \* Broadband
- \* High Power
- \* Low Insertion Loss

**Applications:**

- \* Wireless
- \* Radar
- \* Laboratory Test

### Electrical

Frequency:	32~36GHz
Insertion Loss:	0.5dB max.
Isolation:	20dB min.
VSWR:	1.25 max.
Power Handling:	200W (Verification with the whole machine)

### Mechanical

Interface:	WR-28 (BJ320)
Flange:	FBP320
Material:	Copper
Finish:	Silver plating
Coating:	Sea gray

### Environmental

Operating Temperature:	-20~+70°C
Non-operating Temperature:	-40~+70°C (80% RH max.)

### How To Order

**FWC-32000-36000-K2-Y-Z**

Y : Material

Z : Flange type

Material naming rules:

C - Copper (Outline A)

Flange naming rules:

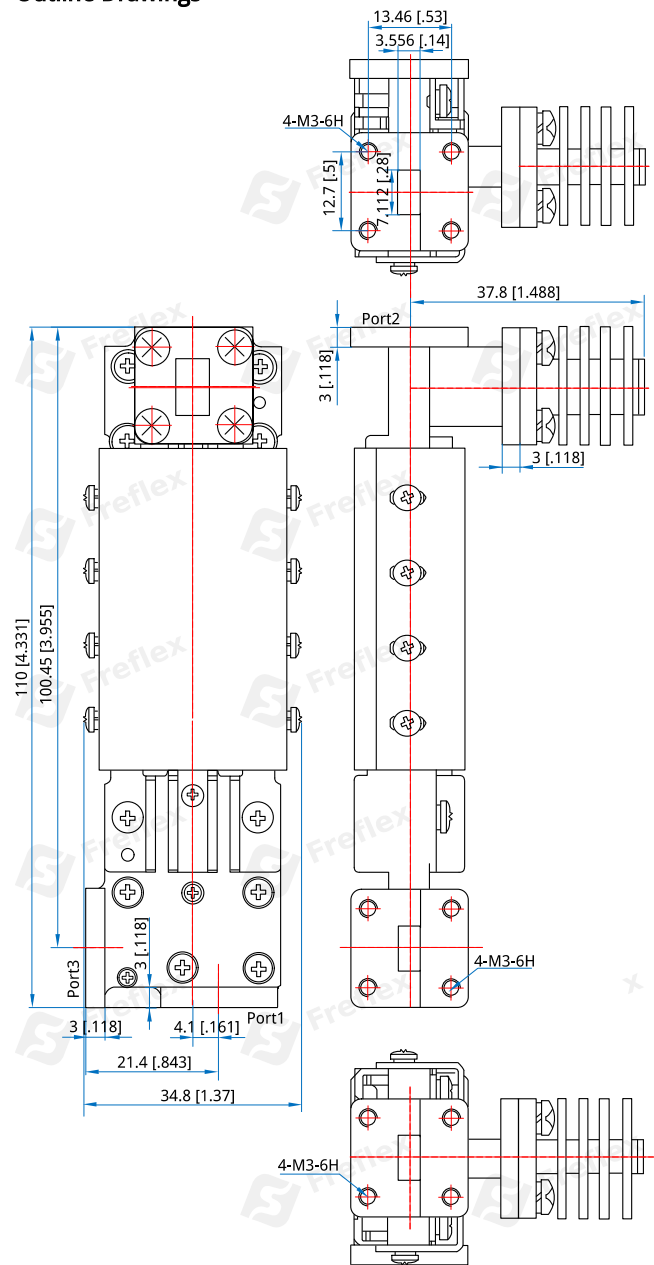
1 - FBP (Outline A)

Examples:

To order a Waveguide Circulator, 32~36GHz, 200W, Copper, FBP320, specify FWC-32000-36000-K2-C-1.

Customization is available upon request.

### Outline Drawings



Outline A

Unit: mm [in]

Tolerance: ±0.5mm [±0.02in]