

FWFA28-K1 WR-28, 100W

Features:
 * Low VSWR
 * High Attenuation Flatness

Applications:
 * Wireless
 * Transmitter
 * Laboratory Test
 * Radar

Electrical

Frequency: 26.3~40GHz
 VSWR: 1.2 max.
 Attenuation: 30±1, 40±1dB
 Average Power: 100W

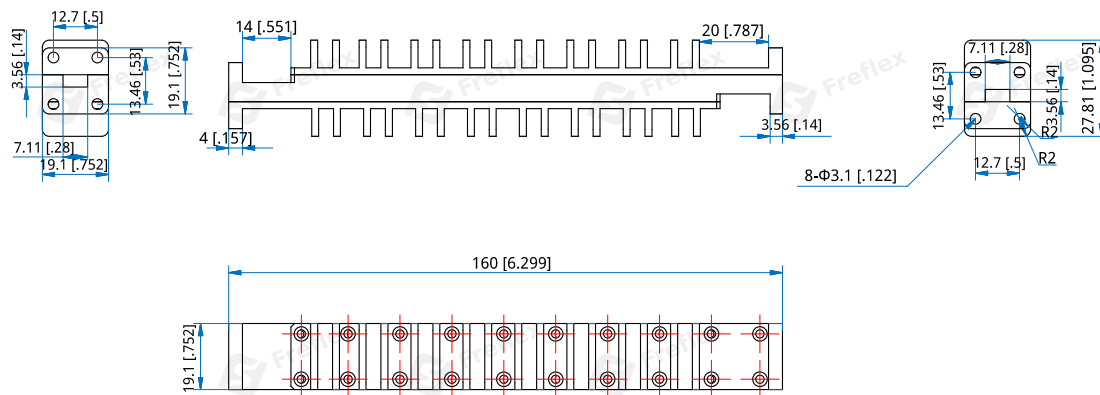
Mechanical

Interface: WR-28 (BJ320)
 Flange: FBP320
 Material: Aluminium
 Finish: Conductive oxidation
 Coating: Gray paint

Environmental

Operating Temperature: -40~+125°C

Outline Drawings



Outline A

Unit: mm [in]

Tolerance: ±0.2mm [±0.008in]

How To Order

FWFA28-K1-X-Y-Z

X: Attenuation in dB (30, 40 - Outline A)

Y: Material

Z: Flange type

Material naming rules:

A - Aluminium (Outline A)

Flange naming rules:

1 - FBP (Outline A)

Examples:

To order a Waveguide Fixed Attenuator, 26.3~40GHz, 40dB, Aluminium, FBP320, specify FWFA28-K1-40-A-1.

Customization is available upon request.